

UNITED STATES BEEF PRODUCTION by the numbers

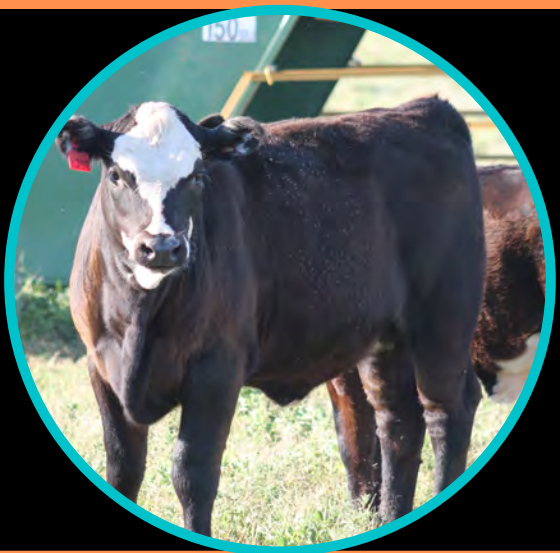


COMMERCIAL BEEF PRODUCTION

The United States produced 27.6 billion pounds of beef.

CASH RECEIPTS

The United States had \$63.1 billion in cash receipts for beef.



NUMBER OF CATTLE/CALVES

The United States had 93.8 million head of cattle.

AVERAGE HEAD PER FARM

A majority of beef production farms have fewer than 20 beef cows, while 9% of operations have over 100 head.



CATTLE LOSS

Cattle loss is inevitable. About 40% of ranches reported cattle loss in 2015.

References

United States Department of Agriculture. (2017, December). Death Loss in US Cattle and Calves due to Predator and Nonpredator Causes, 2015. https://www.aphis.usda.gov/animal_health/nahms/general/downloads/cattle_calves_deathloss_2015.pdf

United States Department of Agriculture. (2022, April 12). Cattle and Beef: Statistics and Numbers. <https://www.ers.usda.gov/topics/animal-products/cattle-beef/statistics-information.aspx>

Widmar, D. (2017, August 21). How Big? A Look at the Size of Beef Operations in the US. Agriculture Economic Insights. <https://aei.org/2017/08/21/size-of-beef-operations/#:-:text=For%20U.S.%20beef%20production%2C%20a,beef%20cows%20have%20been%20observed.>